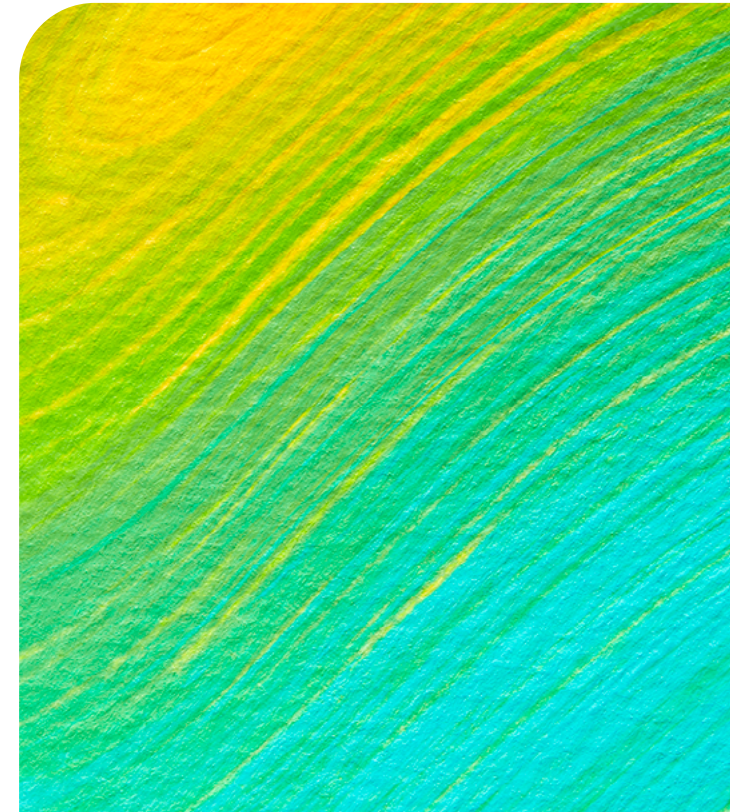




Mondi Group

# Sustainable Development Consolidated Performance Data 2022



## Consolidated performance data

We disclose 2022 data without Russian operations and 2020-2021 data was restated to show continuing operations and support comparability. Pre-2020 data includes Russian operations. We added a section at the end to show the 2022 performance of Russian operations to support transparency.

### Financial performance

€ millions, unless otherwise stated	2018	2019	2020	2021	2022
Group revenue	7,481	7,268	6,663	6,974	8,902
Underlying EBITDA	1,764	1,658	1,353	1,157	1,848
Underlying operating profit	1,318	1,223	925	782	1,443
Operating profit	1,192	1,221	868	789	1,685
Basic underlying earnings per share (EPS) (euro cents)	189.1	171.1	129.3	110.1	195.6
Basic EPS (euro cents)	170.1	167.6	120.0	112.0	244.5
Capital expenditure cash payments	709	757	630	481	508
Net debt	2,220	2,207	1,791	1,689	1,011
ROCE (%)	23.6	19.8	15.2	13.9	23.7

Continuing operations

### Circular driven solutions

Products that are reusable, recyclable or compostable	2020	2021	2022
% of total revenue <sup>1</sup>	74	77	82

1 See our Mondi 'Path to Circularity Scorecard' on page 24 in our 2022 SD report for details on the methodology applied

### Training

	2018	2019	2020	2021	2022
Employee time devoted to training and development <sup>2</sup>	492,171	425,292	174,279	192,446	226,408
Safety training (critical and general)	327,023	370,657	183,473	219,443	204,233
Safety training (critical and general) for recent acquisitions <sup>3</sup>		5,950	1,733	13,264	12,342
<b>Total training hours of employees and contractors</b>	<b>819,194</b>	<b>801,899</b>	<b>359,485</b>	<b>425,153</b>	<b>442,983</b>

2 Including all local vocational training, Mondi Academy, e-learning and sustainability training hours

3 In line with all other safety data, the safety training hours reported exclude recent acquisitions. To show the full scope of training provided to all employees, recent acquisitions are included in the total sum of training hours

Continuing operations

Coverage of safety in total training hours (%)					49
Average training hours <sup>4</sup> per employee per year					20

4 Including safety training for contractors

## Consolidated performance data

### Diversity

Employee numbers <sup>5</sup>	North America		South America		Western Europe		Emerging Europe		Africa		Asia and Australia		Total	
	Total	Female	Total	Female	Total	Female	Total	Female	Total	Female	Total	Female	Total	Female
	%		%		%		%		%		%		%	
Total employees	1,604	21	23	22	6,896	21	10,857	22	1,993	22	617	36	21,990	22
Permanent employees	1,592	21	19	16	6,462	21	10,084	21	1,911	22	611	36	20,679	22
Temporary employees	12	33	4	50	434	21	773	31	82	34	6	50	1,311	28
Full-time employees	1,596	21	23	22	6,494	18	10,754	21	1,919	22	611	37	21,397	21
Part-time employees	8	38	0	0	402	79	103	59	74	24	6	0	593	68
New employee hires	531	22	10	50	1,456	33	2,074	32	328	29	52	37	4,451	31
Employee turnover	497	20	6	33	1,592	19	1,254	23	164	21	93	51	3,606	21

<sup>5</sup> Headcount of employees that are active or on leave as at 31 December 2022

Gender diversity	Male	%	Female	%
Directors	6	67	3	33
Senior managers <sup>6</sup>	238	76	75	24
Production employees	12,939	87	1,928	13
Non-production employees	4,203	59	2,920	41

<sup>6</sup> As at 31 December 2022. Senior managers as defined by Mondi and including directors of all subsidiaries in accordance with the definition set out in Section 414C of the UK Companies Act 2006.

Age diversity	under 30 years old		30-50 years		over 50 years	
	Total	%	Total	%	Total	%
Total employees	3,852	18	12,883	59	5,255	24
Production employees	2,769	19	8,535	57	3,563	24
Non-production employees	1,083	15	4,348	61	1,692	24
New employee hires	2,324	52	1,720	39	407	9
Employee turnover	980	27	1,646	46	980	27

## Consolidated performance data

### Safety

Number of work-related fatalities	2018	2019	2020	2021	2022
Employees	0	0	0	0	0
Contractors	1	2	1	0	1
Continuing operations					
Total recordable case rate (per 200,000 hours worked)	2018	2019	2020	2021	2022
	0.68	0.63	0.68	0.71	0.63 <sup>7</sup>

<sup>7</sup> The total recordable case rate in 2022, including Russia, was 0.55.

Continuing operations

### Audits 2022

	Hours
Management risk focused audits <sup>8</sup>	13,386
First line manager task audits <sup>9</sup>	18,764

<sup>8</sup> Audits by managers which are focused on checking critical controls such as permit to work, risk assessments and isolation and locking out of energy sources as well as talking to employees on the shop floor

<sup>9</sup> Supervisors are required to conduct audits of high risk activities to determine if procedures are understood and adhered to when the task is being conducted

### GHG emissions

GHG emissions from our pulp and paper mills (tonnes)	2019	2020	2021	2022
Scope 1	3,908,247	3,529,550	3,573,354	3,327,051
Scope 2	456,323	429,170	448,449	327,479
<b>Total</b>	<b>4,364,570</b>	<b>3,958,720</b>	<b>4,021,802</b>	<b>3,654,529</b>

Specific GHG emissions from our pulp and paper mills (tonnes per tonne of saleable production)	2019	2020	2021	2022
<b>Scope 1</b>	<b>0.64</b>	<b>0.57</b>	<b>0.56</b>	<b>0.53</b>
Production-related Scope 1	0.49	0.44	0.43	0.40
Sales-related Scope 1	0.15	0.13	0.13	0.13
<b>Scope 2</b>	<b>0.07</b>	<b>0.07</b>	<b>0.07</b>	<b>0.05</b>
<b>Specific total (Scope 1 and 2)</b>	<b>0.71</b>	<b>0.64</b>	<b>0.63</b>	<b>0.58</b>

GHG emissions from our pulp and paper mills, by country 2022 (tonnes)	Tonnes
Austria	160,584
Bulgaria	23,163
Czech Republic	376,255
Finland	98,533

## Consolidated performance data

Poland	213,467
Russia	1,737,633
Slovakia	84,970
South Africa	890,258
Sweden	23,349
Türkiye	46,317
<b>Total</b>	<b>3,654,529</b>

GHG emissions from our pulp and paper mills 2022 (tonnes)	Scope 1	Scope 2	Total
Dynäs (Sweden)	23,349	0	23,349
Frantschach (Austria)	47,847	0	47,847
Hausmening (Austria)	53,506	18,835	72,341
Kematen (Austria)	32,344	8,052	40,396
Kuopio (Finland)	98,533	0	98,533
Merebank (South Africa)	132,072	130,033	262,104
Richards Bay (South Africa)	558,665	69,489	628,154
Ružomberok (Slovakia)	84,970	0	84,970
Stamboljiski (Bulgaria)	23,163	0	23,163
Štětí (Czech Republic)	372,649	3,606	376,255
Świecie (Poland)	123,294	90,173	213,467
Syktvykar (Russia)	1,737,633	0	1,737,633
Tire (Türkiye)	39,026	7,291	46,317

GHG emissions from our converters (tonnes)	2019	2020	2021	2022
Scope 1	142,490	137,470	141,973	142,798
Scope 2	234,515	223,067	181,806	140,557
<b>Total</b>	<b>377,005</b>	<b>360,537</b>	<b>323,779</b>	<b>283,355</b>

GHG emissions by activity (tonnes)	2019	2020	2021	2022
Energy sales-related GHG emissions	912,030	811,088	828,395	839,149
Mills Scope 1 excluding energy sales	2,996,217	2,718,462	2,744,959	2,487,901
Mills Scope 1 emissions from fuel combustion	3,724,295	3,390,534	3,452,197	3,292,281
Mills Scope 1 emissions from use of carbonates	11,307	11,520	15,511	12,567
Mills Scope 1 emissions from production-related mobile transportation	67,661	74,139	77,922	78,779
Mills Scope 1 emissions from landfills and wastewater treatment plants	72,693	45,391	19,856	7,744
Mills Scope 1 emissions from ozone depleting substances	32,290	7,966	7,867	8,634
Mills Scope 1 emissions reduction from PCC plants				-72,954

## Consolidated performance data

GHG emissions from our pulp and paper mills (further details) (tonnes)	2019	2020	2021	2022
Scope 1 GHG emissions from C <sup>10</sup>	3,690,021	3,357,158	3,428,244	3,268,160
Scope 1 GHG emissions from CH <sub>4</sub> <sup>10</sup>	12,190	12,861	12,328	12,267
Scope 1 GHG emissions from N <sub>2</sub> O	89,746	94,654	89,547	90,633
Scope 1 GHG emissions from ozone-depleting substances	32,290	7,966	7,867	8,634
Scope 2 market-based <sup>11</sup>	456,323	429,170	448,449	327,479
Scope 2 location-based <sup>12</sup>	441,333	380,665	455,891	423,597
Biogenic GHG emissions	12,812,150	13,518,291	12,392,133	12,608,722

10 Scope 1 GHG emissions include those from fuel combustion and mobile transportation. Additional Scope 1 GHG emissions in 2022 derive from the operation of landfills and wastewater treatment plants (7,744 tonnes) and the use of carbonates (12,567 tonnes). Scope 1 emissions were decreased by GHG sent to PCC plants (in 2022: 72,954 tonnes)

11 Market-based method: A method to quantify Scope 2 GHG emissions, based on GHG emissions emitted by the generators from which the reporter contractually purchases electricity bundled with instruments, or unbundled instruments on their own (CDP, 'Accounting of Scope 2 emissions', V3, 2016)

12 Location-based method: A method to quantify Scope 2 GHG emissions based on average energy generation emission factors for defined locations, including local, sub-national, or national boundaries (CDP, 'Accounting of Scope 2 emissions', V3, 2016)

Scope 3 GHG emissions (tonnes)	2019 <sup>14</sup>	2020	2021	2022
Purchased goods and services	2,377,997	1,853,696	2,325,578	2,160,432
Fuel and energy-related activities	628,002	613,511	622,604	592,682
Upstream transportation and distribution	465,425	477,332	364,047	379,518
Downstream transportation and distribution	327,724	257,363	206,465	202,734
Employee commuting	48,984	49,412	28,900	28,709
Business travel	11,850	2,145	1,616	2,561
Other <sup>13</sup>	55,000	55,000	55,000	55,000
<b>Total</b>	<b>3,914,982</b>	<b>3,308,460</b>	<b>3,604,211</b>	<b>3,421,637</b>

13 Not relevant Scope 3 categories (capital goods; waste generated in operations; investments; processing, use and end-of-life of sold products) have been estimated and summarised under "other"

14 Restatement of data due to improved data quality



## Consolidated performance data

### Energy

Electricity self-sufficiency of our pulp and paper mills (%)	2018	2019	2020	2021	2022
Own electricity produced	100.2	102.1	83.7	78.1	80.6
Electricity purchased	17.5	14.9	20.1	25.2	22.9
Electricity sold	17.7	17.0	3.7	3.3	3.5

Continuing operations

Fuel consumption of our pulp and paper mills (million GJ)	2018	2019	2020	2021	2022
Produced from our own biomass	84.3	86.4	70.6	62.6	64.9
Purchased fuel	70.3	71.3	35.4	35.2	34.8

Continuing operations

Total fuel consumption from non-renewable sources <sup>15</sup> (GJ)	2018	2019	2020	2021	2022
Black coal	7,044,927	6,923,940	5,168,909	5,549,786	5,771,046
Brown coal	2,836,275	3,254,698	3,143,412	3,150,767	2,853,180
Heavy fuel oil	863,764	1,209,792	487,566	593,300	745,481
Natural gas	46,785,317	46,035,922	12,204,066	11,869,470	10,975,560
Other fossil fuel	748,527	1,687,075	1,589,800	1,579,581	1,929,252

<sup>15</sup> Fuels are reported according to their lower heating value (LHV); the emissions factor source is taken from ÜBPV (BGBl II Nr. 339/2007)

Continuing operations

Total fuel consumption from renewable sources (GJ)	2018	2019	2020	2021	2022
Biomass purchased	13,939,473	14,087,189	14,532,957	14,224,401	14,182,872
Black liquor/base liquor - thickened	71,468,423	72,833,265	60,311,249	52,531,374	54,969,430
Own biomass	9,872,304	10,029,633	7,558,912	7,465,496	8,283,605
Other renewable fuel	3,312,916	3,858,592	2,992,689	2,899,174	1,935,789

Continuing operations

Fuel sources for our pulp and paper mills (%)	2018	2019	2020	2021	2022
<b>Renewables</b>	<b>64</b>	<b>64</b>	<b>81</b>	<b>79</b>	<b>80</b>
Black liquor	46.2	46.2	56.9	53.7	55.1
Purchased biofuel	9.2	9.1	14.0	14.9	14.5
Own biomass	6.4	6.4	7.1	7.6	8.3
Other biofuel	1.9	2.3	2.5	2.6	1.6
<b>Non-renewables</b>	<b>36</b>	<b>36</b>	<b>19</b>	<b>21</b>	<b>20</b>
Natural gas	29.2	28.2	10.2	10.7	9.7
Black coal	4.6	4.4	4.9	5.7	5.8
Brown coal	1.8	2.1	3.0	3.2	2.9
Other fossil fuel	0.6	1.4	1.4	1.6	2.0

Continuing operations

## Consolidated performance data

Production-related specific energy (GJ per tonne of saleable production)	2018	2019	2020	2021	2022
Electricity consumption	3.97	3.97	3.68	3.32	3.38
Heat consumption	12.67	12.28	11.40	11.09	11.33
<b>Total energy consumption in our pulp and paper mills</b>	<b>16.64</b>	<b>16.25</b>	<b>15.08</b>	<b>14.41</b>	<b>14.71</b>

Continuing operations

Energy use of our pulp and paper mills (GJ)	2018	2019	2020	2021	2022
Electricity purchased	4,250,850	3,623,860	3,468,404	4,492,261	4,143,350
Own biomass	84,334,769	86,413,615	70,563,075	62,588,575	64,881,724
Purchased biofuel	14,258,347	14,393,349	14,828,655	14,531,364	14,489,712
Fossil fuels consumed	55,999,985	56,902,394	20,594,613	20,704,626	20,316,738
Heat purchased	83,545	73,088	0	0	0
Energy sales	-10,198,309	-9,835,515	-2,972,567	-2,846,131	-3,022,088
<b>Total</b>	<b>148,729,187</b>	<b>151,570,791</b>	<b>106,482,180</b>	<b>99,470,695</b>	<b>100,809,436</b>

Continuing operations

Energy use of our converting operations (GJ)	2018	2019	2020	2021	2022
Electricity purchased	1,948,379	1,866,083	1,727,100	1,764,440	1,607,535
Fossil fuels consumed	2,278,825	2,209,033	1,999,140	2,038,279	1,957,781
Purchased biofuel				505	260
Heat purchased	182,561	195,472	203,891	231,658	201,064
<b>Total</b>	<b>4,409,764</b>	<b>4,270,588</b>	<b>3,930,131</b>	<b>4,034,883</b>	<b>3,766,640</b>

Continuing operations

	2018	2019	2020	2021	2022
<b>Electricity purchased from renewable sources (%)</b>	<b>2</b>	<b>9</b>	<b>5</b>	<b>43</b>	<b>60</b>



## Consolidated performance data

### Forests and fibre procurement

Forestry data 2022	South Africa
Total area of forestry landholdings (ha)	252,858
Total percentage of forestry landholdings certified to FSC	100 <sup>16</sup>
Proportion of land set aside for conservation (%)	28
Number of seedlings planted	19,774,738

16 The total percentage of forestry landholdings certified to FSC in 2022, including Russia, was 100%.

Wood fibre use in the manufacturing process	2018	2019	2020	2021	2022
Wood (internal and external) (million m <sup>3</sup> )	17.4	17.6	13.8	13.3	14.5
Pulp (externally procured) (million tonnes)	0.3	0.3	0.2	0.3	0.3
Paper for recycling (million tonnes)	1.3	1.3	1.3	1.4	1.3

Continuing operations

Certified pulp procured (%)	2018	2019	2020	2021	2022
FSC™	85	93	91	93	93
PEFC™	9	6	3	7	7
<b>Total</b>	<b>94</b>	<b>99</b>	<b>94</b>	<b>100</b>	<b>100</b>

Continuing operations

Certified wood procured (%)	2018	2019	2020	2021	2022
FSC™	49	46	36	39	42
PEFC™	22	26	37	37	33
<b>Total</b>	<b>71</b>	<b>72</b>	<b>73</b>	<b>76</b>	<b>75<sup>17</sup></b>

17 The total certified wood procured (%) in 2022, including Russia, was 72%

Continuing operations

## Consolidated performance data

### Water, Air and Waste

#### Water

Water input (m <sup>3</sup> )	2018	2019	2020	2021	2022
<b>Potable water input</b>	<b>24,332,544</b>	<b>27,180,356</b>	<b>21,737,613</b>	<b>20,224,989</b>	<b>22,937,553</b>
<b>Non-potable water</b>	<b>279,126,563</b>	<b>279,119,444</b>	<b>199,316,881</b>	<b>204,545,028</b>	<b>195,902,938</b>
Second-class water	9,290,059	8,218,302	3,552,869	3,387,477	2,794,560
Surface water	247,081,374	252,751,131	176,466,284	182,512,287	174,568,058
Ground water	22,755,130	18,150,011	19,297,729	18,645,264	18,540,320
<b>Total water input (m<sup>3</sup>)</b>	<b>303,459,107</b>	<b>306,299,800</b>	<b>221,054,494</b>	<b>224,770,017</b>	<b>218,840,490</b>

Continuing operations

Total water input (%)	2017	2018	2019	2020	2021
Non-potable water	92	91	90	91	90
Potable water	8	9	10	9	10

Continuing operations

Contact and non-contact water use (m <sup>3</sup> )	2018	2019	2020	2021	2022
Non-contact water	97,438,070	99,317,853	74,208,554	76,063,311	68,654,192
Contact water	202,783,297	203,736,411	145,825,665	146,358,536	146,439,387

Continuing operations

Water discharges (m <sup>3</sup> )	2018	2019	2020	2021	2022
Discharge via on-site or off-site treatment	228,523,805	235,836,629	150,050,692	151,265,699	149,495,370
Discharge of non-contact water to surface water	85,031,235	87,798,958	64,706,666	65,762,023	60,934,218
Discharge to irrigate land	54,660	50,474	35,068	30,638	41,891
Discharge sent to third parties for recycling or reuse of water	1,634,045	1,200,584	1,129,174	1,759,703	1,678,580
<b>Total water output (including third parties)</b>	<b>315,243,745</b>	<b>324,886,644</b>	<b>215,921,600</b>	<b>218,818,063</b>	<b>212,150,059</b>
Waste water from third parties and other Mondi operations	36,288,548	36,972,077	15,081,041	12,980,304	11,793,073
<b>Total water output (excluding third parties)</b>	<b>278,955,197</b>	<b>287,914,568</b>	<b>200,840,558</b>	<b>205,837,758</b>	<b>200,356,986</b>
Water discharged to ocean/sea	22,095,268	21,243,214	16,772,673	17,813,740	21,368,559
Water discharged to rivers	293,148,477	303,643,430	199,148,927	201,004,323	190,781,500

Continuing operations

Emissions to water (tonnes)	2018	2019	2020	2021	2022
COD	48,349	48,549	29,754	27,455	28,479
AOX	150	153	62	44	62
TSS	11,417	9,307	5,676	4,039	5,577

Continuing operations

## Consolidated performance data

Water footprint by type 2022 <sup>18</sup> (%)	2021
<b>Green water</b>	<b>94.2</b>
from purchased wood	68.8
from own wood	7.1
from purchased pulp	1.2
from recovered paper	17.2
<b>Blue water</b>	<b>2.5</b>
ground water	0.2
surface water	2.0
potable water	0.3
second-class water	0.0
<b>Grey water</b>	<b>3.3</b>

18 Representing a total of approximately 8.7 billion m<sup>3</sup>

## Consolidated performance data

<b>Air</b>					
<b>Air emissions (tonnes)</b>	<b>2018</b>	<b>2019</b>	<b>2020</b>	<b>2021</b>	<b>2022</b>
Total NOx emissions from processes	10,398	11,031	6,423	6,448	6,255
TRS from processes	55	44	37	31	35
Total particulate emissions	1,023	928	648	742	687
Total SO <sub>2</sub> emissions from processes	1,567	1,276	1,016	1,212	1,399
Continuing operations					
<b>Particulate emissions from processes (tonnes)</b>	<b>2018</b>	<b>2019</b>	<b>2020</b>	<b>2021</b>	<b>2022</b>
Particulate emissions from drying of pulp	2	1	1	1	1
Particulate emissions from bark boiler	140	105	21	28	28
Particulate emissions from lime kiln	65	71	48	38	39
Particulate emissions from auxiliary boilers	158	157	126	110	124
Particulate emissions from recovery boiler	655	593	451	564	490
Particulate emissions from other sources (allocated to paper production)	0	0	0	0	4
Particulate emissions from other sources (allocated to pulp production)	2	0	1	1	1
<b>Total</b>	<b>1,023</b>	<b>928</b>	<b>648</b>	<b>742</b>	<b>687</b>
Continuing operations					
<b>Emissions of ozone-depleting substances (kg)</b>	<b>2018</b>	<b>2019</b>	<b>2020</b>	<b>2021</b>	<b>2022</b>
HFC	10,101	15,949	3,473	2,769	3,676
HCFC	740	413	274	344	388
CFC	0	0	0	0	0
Halons	0	0	0	0	0
PFC	0	0	0	0	0
<b>Total</b>	<b>10,841</b>	<b>16,361</b>	<b>3,747</b>	<b>3,113</b>	<b>4,063</b>
Continuing operations					

## Consolidated performance data

<b>Waste</b>					
<b>Waste to landfill (tonnes)</b>	<b>2018</b>	<b>2019</b>	<b>2020</b>	<b>2021</b>	<b>2022</b>
Non-hazardous waste landfilled	231,261	227,196	120,770	123,949	110,672
Hazardous waste landfilled	1,054	1,390	297	289	5,093
<b>Total</b>	<b>232,315</b>	<b>228,585</b>	<b>121,067</b>	<b>124,238</b>	<b>115,765</b>
Continuing operations					
<b>Hazardous waste (tonnes)</b>	<b>2018</b>	<b>2019</b>	<b>2020</b>	<b>2021</b>	<b>2022</b>
Hazardous waste treated	11,061	11,448	10,746	10,454	9,861
Hazardous waste incinerated	5,683	3,225	3,960	3,551	3,488
Hazardous waste recycled/reused	3,854	2,695	2,574	2,331	2,558
Hazardous waste landfilled	1,054	1,390	297	289	5,093
<b>Total</b>	<b>21,653</b>	<b>18,757</b>	<b>17,577</b>	<b>16,626</b>	<b>20,999</b>
Continuing operations					
<b>Non-hazardous waste (tonnes)</b>	<b>2018</b>	<b>2019</b>	<b>2020</b>	<b>2021</b>	<b>2022</b>
Non-hazardous waste treated	7,007	7,175	4,070	3,453	5,018
Non-hazardous waste incinerated	52,447	62,702	72,777	111,485	114,421
Non-hazardous waste recycled/reused	825,364	745,255	620,765	670,510	641,092
Non-hazardous waste landfilled	231,261	227,196	120,770	123,949	110,672
<b>Total</b>	<b>1,116,080</b>	<b>1,042,327</b>	<b>818,382</b>	<b>909,398</b>	<b>871,203</b>
Continuing operations					
<b>Hazardous waste (%)</b>				<b>2021</b>	<b>2022</b>
Hazardous waste treated				63%	47%
Hazardous waste incinerated				21%	17%
Hazardous waste recycled/reused				14%	12%
Hazardous waste landfilled				2%	24%
<b>Non-hazardous waste (%)</b>				<b>2021</b>	<b>2022</b>
Non-hazardous waste treated				0%	1%
Non-hazardous waste incinerated				12%	13%
Non-hazardous waste recycled/reused				74%	74%
Non-hazardous waste landfilled				14%	13%

## Consolidated performance data

<b>Total debris<sup>19</sup> (tonnes)</b>	<b>2018</b>	<b>2019</b>	<b>2020</b>	<b>2021</b>	<b>2022</b>
Non-hazardous debris	74,928	260,571	57,367	40,972	<b>22,455</b>
Hazardous debris	153	287	6,363	191	<b>24</b>
<b>Total</b>	<b>75,081</b>	<b>260,858</b>	<b>63,731</b>	<b>41,162</b>	<b>22,479</b>

<sup>19</sup> Process-related waste, which is disposed on landfill, is reported as "hazardous waste to landfill" or "non-hazardous waste to landfill". Debris from construction activities on-site (including soil) is also monitored, but reported separately

Continuing operations

	<b>2018</b>	<b>2019</b>	<b>2020</b>	<b>2021</b>	<b>2022</b>
<b>Total solid waste (tonnes)</b>	1,212,814	1,321,943	899,690	967,186	<b>914,681</b>

Continuing operations

## Consolidated performance data

### Environmental compliance

Environmental complaints	2020	2021	2022
Odour complaints	214	78	153
Noise complaints	66	29	13
Other complaints	4	6	1
<b>Total</b>	<b>284</b>	<b>113</b>	<b>167</b>

Incidents and non-compliances	2020	2021	2022
Major environmental incidents <sup>20</sup>	31	24	28
Report of minor non-compliances	75	85	38

<sup>20</sup> A major environmental incident is any occurrence that has resulted in the loss of primary containment of at least 1 kg of a GHS hazard category 1 substance or >10 used to categorise chemicals by their hazardous characteristics. GHS is an internationally agreed upon system, created by the United Nations kg of all other GHS classified substances. GHS is the 'Globally Harmonized System of Classification and Labelling of Chemicals'

### Communities

Social investment ('000 €)	2018	2019	2020	2021	2022
Health and wellbeing	2,079	984	911	1,132	1,995
Education	724	838	715	937	793
Infrastructure and development	4,697	10,721	2,369	2,710	2,873
Enterprise and employment support	431	548	472	469	523
Environmental protection				101	301
COVID-19			305	15	0
Donations to Ukraine <sup>21</sup>					2,497
<b>Total<sup>22</sup></b>	<b>7,931</b>	<b>13,091</b>	<b>4,772</b>	<b>5,364</b>	<b>8,982</b>

<sup>21</sup> Donations to Ukraine added in 2022 to provide an overview of Mondi's contribution to humanitarian help in Ukraine and for Ukraine refugees

<sup>22</sup> Changes in investment levels over the years do not necessarily represent a change in investment strategy. They are sometimes reflective of the commencement or closure of projects. Most initiatives run over several years and require different levels of investment for each development phase

Continuing operations

Value distribution <sup>23</sup> (%)	2022
Employees	34%
Dividends	10%
Taxes	10%
Interest	5%
Reinvested	41%
<b>Total in € million</b>	<b>3,167</b>

<sup>23</sup> Defined as operating profit before taking into account personnel costs and depreciation, amortisation and impairments



## Consolidated performance data – Russian operations

### Russia – Energy, water, air and waste

#### GHG emissions

GHG emissions from our pulp and paper mills (tonnes)	2022
Scope 1	1,737,633
Scope 2	0
<b>Total</b>	<b>1,737,633</b>

GHG emissions from Russian converters (tonnes)	2022
Scope 1	12,016
Scope 2	9,226
<b>Total</b>	<b>21,242</b>

#### Energy

Total fuel consumption from non-renewable sources <sup>24</sup> (GJ)	2022
Black coal	0
Brown coal	0
Heavy fuel oil	121,068
Natural gas	30,023,908
Other fossil fuel	47,994

<sup>24</sup> Fuels are reported according to their lower heating value (LHV); the emissions factor source is taken from ÜBPV (BGBl II Nr. 339/2007)

Total fuel consumption from renewable sources (GJ)	2022
Biomass purchased	499,568
Black liquor/base liquor – thickened	15,045,771
Own biomass	3,049,676
Other renewable fuel	838,554

Energy use of Russian pulp and paper mills (GJ)	2022
Electricity purchased	0
Own biomass	18,934,001
Purchased biofuel	499,568
Fossil fuels consumed	30,010,028
Heat purchased	82,195
Energy sales	-7,085,604
<b>Total</b>	<b>42,440,188</b>

## Consolidated performance data – Russian operations

<b>Energy use of Russian converting operations (GJ)</b>	2022
Electricity purchased	88,569
Fossil fuels consumed	182,942
<b>Total</b>	<b>271,511</b>

### Water

<b>Water input (m<sup>3</sup>)</b>	2022
<b>Total water input (m<sup>3</sup>)</b>	<b>76,898,389</b>

<b>Contact and non-contact water use (m<sup>3</sup>)</b>	2022
Non-contact water	20,273,271
Contact water	53,963,750

<b>Water discharges (m<sup>3</sup>)</b>	2022
<b>Total water output (including third parties)</b>	<b>98,722,957</b>
Waste water from third parties and other Mondi operations	19,770,763
<b>Total water output (excluding third parties)</b>	<b>78,952,194</b>

<b>Emissions to water (tonnes)</b>	2022
COD	4,631
AOX	45
TSS	154

### Air

<b>Air emissions (tonnes)</b>	2022
Total NO <sub>x</sub> emissions from processes	4,072
TRS from processes	22
Total particulate emissions	196
Total SO <sub>2</sub> emissions from processes	40

<b>Emissions of ozone-depleting substances (kg)</b>	2022
HFC	374
HCFC	27
<b>Total</b>	<b>401</b>

## Consolidated performance data – Russian operations

### Waste

<b>Waste to landfill (tonnes)</b>	<b>2022</b>
Non-hazardous waste landfilled	7,285
Hazardous waste landfilled	0
<b>Total</b>	<b>7,285</b>



[Click here for definitions of key terminology](#)

For definitions of any of the terms used in this index please see the glossary of our Sustainable Development report.



[Click here to download our consolidated performance data in excel](#)

To make our key performance tables more accessible and convenient, we have included them in a downloadable spreadsheet.